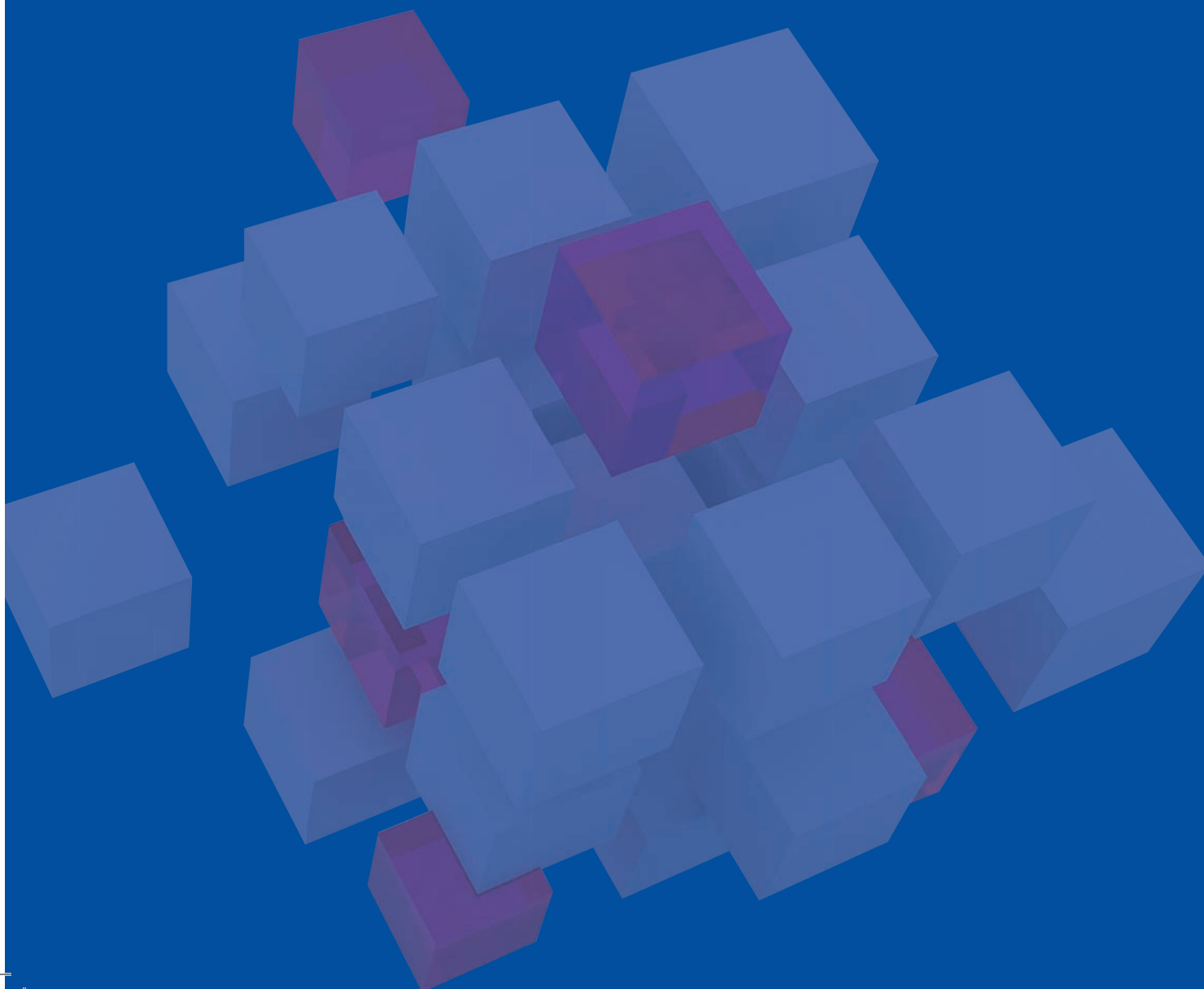


# FUELING OUR FUTURE.

The First Internal Funding Showcase

February 24, 2020  
Alumni Hall

Sponsored by the Office of the Provost  
and the Office of the Senior Vice Chancellor  
for Research



## WELCOME

Welcome to the University of Pittsburgh's inaugural Internal Funding Showcase. We are excited by the opportunity to bring resources and recognition to faculty who are brimming with innovative ideas in both research and the classroom. We congratulate all the awardees here today and hope that this showcase helps to spread their enthusiasm for interdisciplinary scholarship and teaching across our campus, into the community, and beyond.



Our new **Pitt Momentum Funds** restructured and extend a group of existing research development funds (the Central Research Development Fund, Social Science Research Initiative, and Special Initiative to Promote Scholarly Activities in the Humanities) into a tiered set of awards designed to offer support across multiple stages of large, ambitious projects.



The suite of funds consists of: **Seeding Grants**, which support significant and innovative scholarship by individual or small groups of faculty; **Teaming Grants**, which support the early stage planning and capacity building of large multidisciplinary projects; and **Scaling Grants**, which support the detailed project planning, gathering of proof-of-concept results, and reduction of technical risk so that teams can competitively pursue large, complex, extramural funding.

**Forge Your Own Path - Personalized Education Grants** provide key support to the Pitt community to develop transformative ideas for how courses, advising, and extracurricular programming can be matched to the interests and goals of individual students. In addition, we are highlighting a suite of other internal funding programs such as Pitt Seed Grants, Innovation in Education Awards, and Course Incubator Grants.

As researchers know, funding agencies are increasingly looking for results-driven inquiries that can contribute meaningful insight, understanding, or solutions to societal challenges through an array of scientific, clinical, public policy, business, or technical considerations. Today you will learn how this year's awardees are growing the already impressive work of individuals and small teams here at Pitt into large-scale inquiries.

We also extend our sincerest thanks to all the reviewers and members of the University Research Council. Without your dedication and hard work, these awards would not be possible. Thank you.

Sincerely,

A handwritten signature in black ink, appearing to read "Ann E. Cudd".

Ann E. Cudd  
Provost and Senior Vice Chancellor

A handwritten signature in black ink, appearing to read "Rob A. Rutenbar".

Rob A. Rutenbar  
Senior Vice Chancellor for Research



## AGENDA

### Seventh-floor Auditorium

- 1-1:10 p.m. Welcome**  
**Ann E. Cudd**, Provost and Senior Vice Chancellor and **Rob A. Rutenbar**, Senior Vice Chancellor for Research
- Brief Talks on Accomplishments of Prior Funding**
- 1:15-1:45 p.m. Erin Anderson**, Department of English  
 “Dear Mr. President: A Podcast in Letters”  
 2019 Special Initiative to Promote Scholarly Activities in the Humanities
- 1:50-2:20 p.m. Carla Ng**, Department of Civil and Environmental Engineering  
 “Can the Toxic Equivalency Approach Be Used for Perfluorinated Water Contaminants?”  
 2018 Central Research Development Fund
- 2:25-2:55 p.m. Gina Garcia**, Department of Administrative and Policy Studies  
 “Faculty Development at One Hispanic-serving Community College: Exploring Relationships between Student Outcomes and Faculty Knowledge, Skills, and Behaviors”  
 2019 Central Research Development Fund
- 3-3:15 p.m. Announcement of Teaming Grant Awardees**  
**Rob A. Rutenbar**
- 3:15-3:30 p.m. Break**

### J. W. Connolly Ballroom

- 3:30-3:45 p.m. Announcement of Forge Your Own Path - Personalized Education Grant Awardees**  
**Ann E. Cudd**
- 3:45-4:15 p.m. Panel Discussion: Academic Innovation**
- Brian Galla**, Department of Psychology in Education  
 “Personalizing Undergraduate STEM Learning through Mobile Mindfulness Training”  
 2018 Personalized Education Grant Award
- Lorna Kearns**, University Center for Teaching and Learning  
 “LMS Platform for Online Continuing Education”  
 2018 Pitt Seed Grant Award
- Jane Wallace**, Department of Economics  
 “Micro- and Macroeconomics Theory Incubator”  
 2018 Course Incubator Project
- 4:20-4:35 p.m. Announcement of Scaling Grant Awardees**  
**Patrick Gallagher**, Chancellor
- 4:35-4:45 p.m. Recognition of University Research Council Coordinators and Reviewers**  
**Rob A. Rutenbar**
- 4:45 p.m.-5 p.m. Break**
- 5-6:30 p.m. Reception and Poster Session**



## SCALING GRANTS

Scaling Grants, which provide up to \$400,000 over two years, support detailed project planning, gathering of proof-of-concept results, and reduction of technical risk so that teams can competitively pursue an identified large extramural funding opportunity. Scaling Grants are specifically designed to further the goal of the *Plan for Pitt* to engage in research of impact by positioning the University to participate in large research collaborations.

### Attacking the Global Plastics Waste Problem

**Eric Beckman**, Department of Chemical and Petroleum Engineering; **Melissa Bilec**, Department of Civil and Environmental Engineering; **Vikas Khanna**, Department of Civil and Environmental Engineering; **Götz Vesper**, Department of Chemical and Petroleum Engineering; **Peng Liu**, Department of Chemistry; **Amy Wildermuth**, School of Law; and **Joshua Galperin**, School of Law

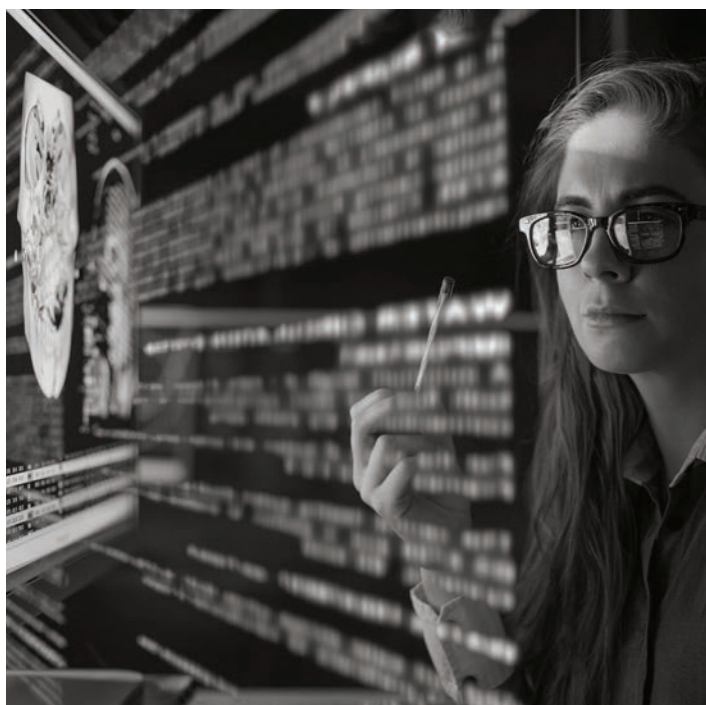
Plastic waste is a growing problem on a global scale, with the annual global production of synthetic polymers standing at more than 500 million tons per year and predicted to triple by 2036. At present, large volumes of polymeric waste migrate directly into the environment, and less than 2% of polymeric waste is collected and reused in high-value applications. A key obstacle to effective recycling is the vast number of formulations, each tailored to address

a particular type of application, which is key to the commercial success of polymers. But that success creates a near-impossible separation problem during mechanical recycling and renders current approaches to chemical recycling inefficient. We are proposing to address this problem by creating a convergent academic center focused on the circular economy of synthetic polymers. This center will tightly integrate the science and engineering of plastics recycling—via a novel approach to the chemical recycling of polyolefins using liquid metal catalysts and the a priori design of recyclable thermoset plastics—into the framework of life cycle and techno-economic analyses. Moreover, existing environmental regulatory frameworks pose challenges to technical innovation in recycling, so we will develop new legal and governance frameworks to enable the deployment of our new circular economy for plastics. Toward this goal, the center will draw upon faculty from the Swanson School of Engineering, Kenneth P. Dietrich School of Arts and Sciences, and School of Law with the required complementary expertise.



## Pittsburgh Center for Artificial Intelligence Innovation in Medical Imaging

**Shandong Wu**, Department of Radiology; **David Vorp**, Department of Bioengineering; **Ashok Panigrahy**, Department of Radiology; **John Gilbertson**, Department of Biomedical Informatics; **Seong Jae Hwang**, Department of Computer Science; **Wendie Berg**, Department of Radiology; **Kayhan Batmanghelich**, Department of Biomedical Informatics; **Rivka Colen**, Department of Radiology; **Michael Becich**, Department of Biomedical Informatics; **Jules Sumkin**, Department of Radiology; and **Robert Nishikawa**, Department of Radiology



Artificial intelligence (AI) is the new revolutionary technique for medical research and is at the forefront of reshaping tomorrow's clinical practice of medical imaging in radiology and pathology. Our long-term vision is to build a center for innovative AI in clinical translational medical imaging by combining computational expertise and clinical resources across Pitt, UPMC, and Carnegie Mellon University. The overarching research goal of the center is to build advanced and trustworthy imaging AI that is clinically useful, accurate, explainable, and safe. The research will focus on multidisciplinary and cutting-edge AI imaging methodology and translational applications centered on three key components that are essential to bringing new AI imaging tools to clinical practice: clinical need-driven medical imaging AI development and the evaluation of tools, models, systems, and informatics; core imaging AI theory, methodology, and algorithm investigation; and linking imaging phenotypes to the biological (genomics and proteomics) underpinnings.



## TEAMING GRANTS

Teaming Grants, which provide up to \$60,000 per year, support the formation of new multidisciplinary collaborations to successfully pursue large-scale extramural funding. Team- and community-building activities may include, but are not limited to, inviting external speakers, creating a working paper series, and organizing a workshop. Teaming Grants, like Scaling Grants, are specifically designed to further the goal of the *Plan for Pitt* to engage in research of impact by positioning the University to participate in large research collaborations.

### **A Black Women’s Health Agenda: Applying an Intersectional Systems Approach and Reproductive Justice Lens**

**Dara Mendez**, Department of Epidemiology; **Tiffany Gary-Webb**, Department of Epidemiology; **Esa Davis**, Department of Medicine; **Abi Fapohunda**, Department of Africana Studies; **Tomar Pierson-Brown**, School of Law; **Jada Shirriel**, Healthy Start, Inc.; **Alysia Tucker**, Allegheny County Health Department; **Dannai Wilson**, Allegheny County Health Department; and **La’Tasha Mayes**, New Voices for Reproductive Justice

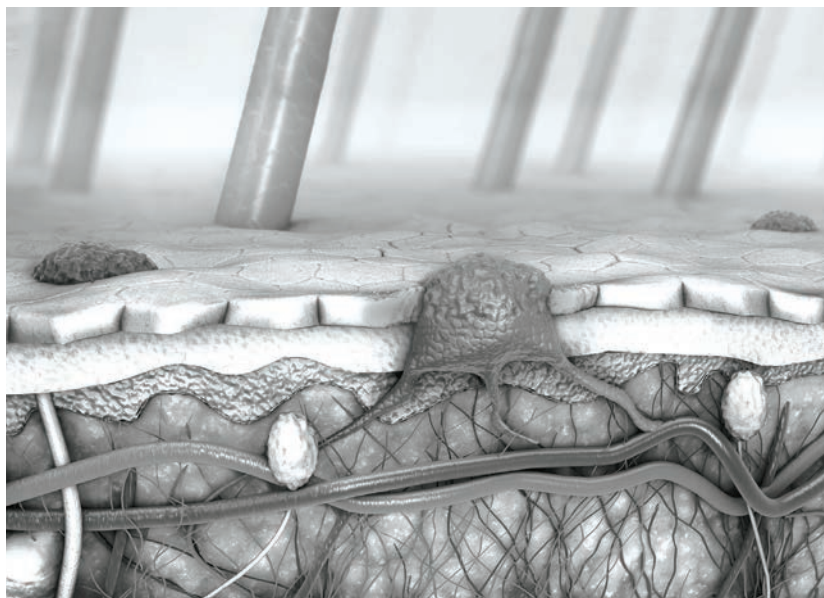
While Black women and femmes carry the disproportionate burden of health inequities in Allegheny County, their lives and experiences are not centered in the development and execution of solutions. This project will develop a Black Women’s Health Agenda for Allegheny County based on an environmental scan of existing programs, policies and local funding to assess whether the health and well-being of Black women and femmes are being addressed. The strategic plan, developed through continuous community engagement, will define an agenda spanning research, practice and policy.



## Deciphering Redox Free Radical Mechanisms of 15LOX/PEBP1-driven Ferroptosis in Skin

**Yuri Bunimovich**, Department of Dermatology; **Valerian Kagan**, Department of Environmental and Occupational Health; and **Sunil Saxena**, Department of Chemistry

Understanding the mechanisms and regulation of ferroptosis in the skin will be critical for the prevention and treatment of radiation- and drug-induced skin injury as well as of inflammatory, autoimmune and neoplastic cutaneous diseases such as psoriasis, lupus and melanoma.



## Developing University Infrastructure to Foster Equity and Inclusion in College Classrooms

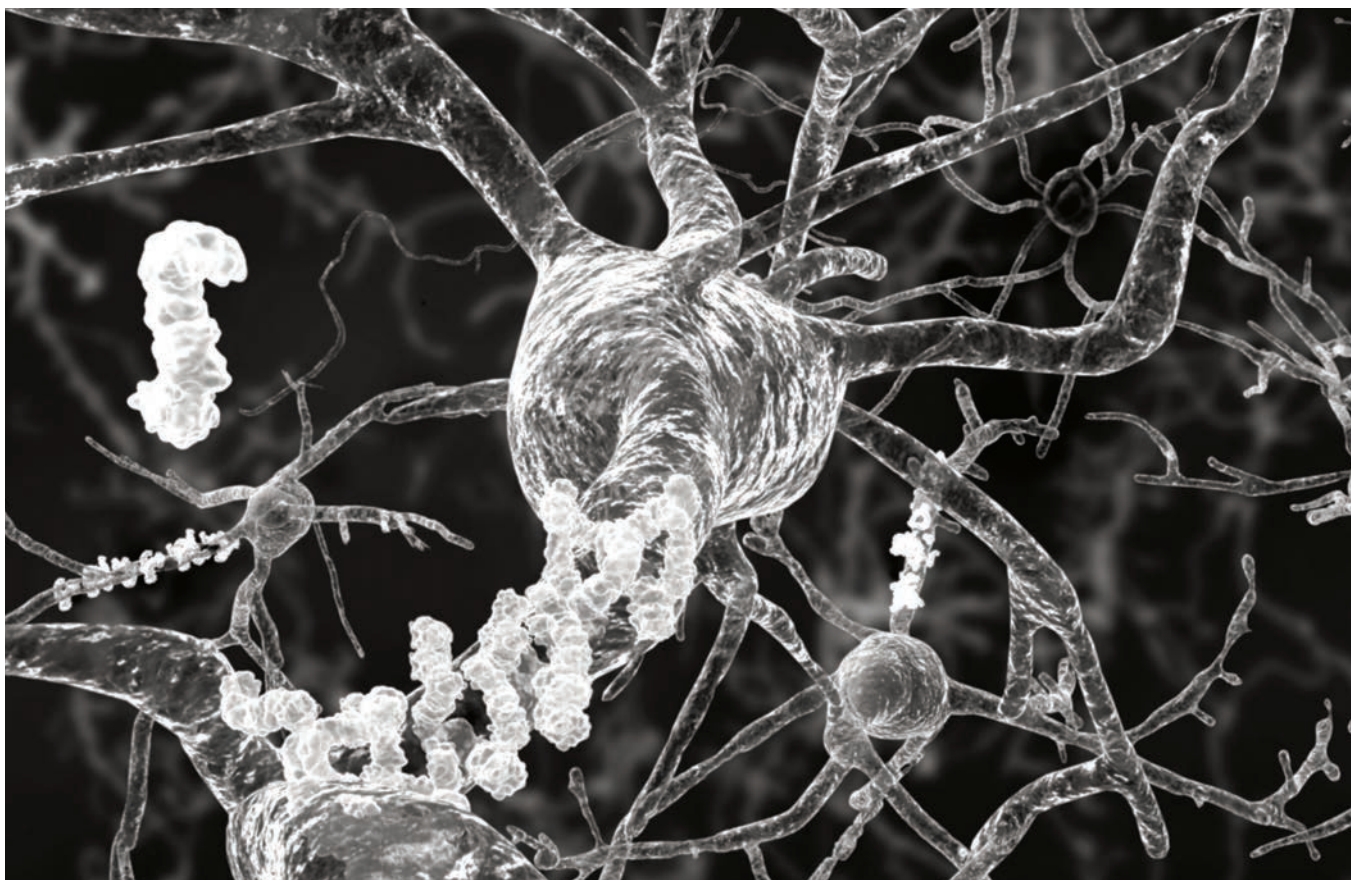
**Kevin Binning**, Department of Psychology; **Lorna Kearns**, University Center for Teaching and Learning; **Linda DeAngelo**, Department of Administrative and Policy Studies; **Christian Schunn**, Department of Psychology; and **Erica McGreevy**, Department of Biological Sciences

In our increasingly diverse society, it is imperative to understand how higher education can serve as an engine for equity and success for all students. This project seeks to build the infrastructure to change university culture in ways that foster equity by building a collaboration with Indiana University Bloomington, whose expertise in learning analytics for faculty complements Pitt's expertise in developing classroom interventions that provide students with a narrative to see adversity as normal and temporary.

## History and Future of the “Neglected Tropical Diseases”: Integrating Qualitative and Quantitative Research to Improve Public Health Outcomes

**Mari Webel**, Department of History; **Sarah Krier**, Department of Infectious Diseases and Microbiology; **Thuy Bui**, Department of Medicine; **Matiangai Sirleaf**, School of Law; **Michael R. Dietrich**, Department of History and Philosophy of Science; and **Wilbert Van Panhuis**, Department of Epidemiology

This new multidisciplinary research team will explore the historical and ongoing dynamics that have influenced the scientific priorities, funding resources, and research capacities focused on the high-morbidity, low-mortality neglected tropical diseases (NTDs) that generally affect impoverished populations. Specifically, the team will investigate how the designation of an illness as an NTD has impacted the development of new knowledge, diagnostic tools, vaccines, treatments, or laws and policies.



## Identification of Factors Associated with Subsequent Alzheimer's Disease Diagnosis Using Machine Learning over Complex Large-scale Longitudinal Health Data

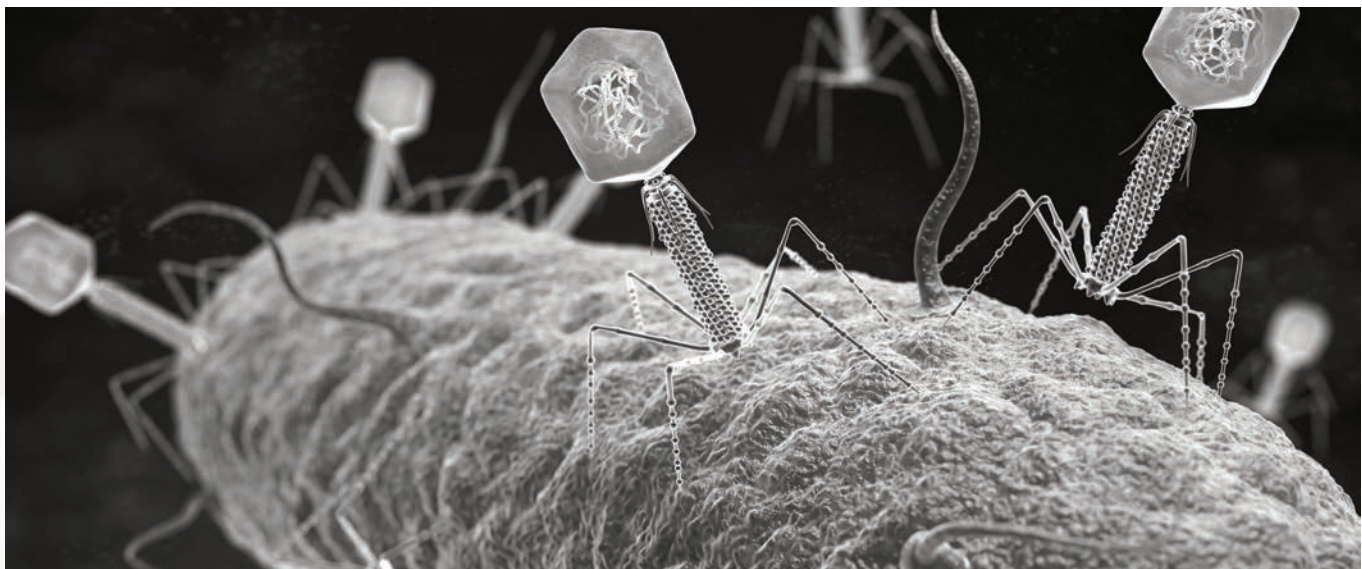
**Richard Boyce**, Department of Biomedical Informatics; **Steven Albert**, Department of Behavioral and Community Health Sciences; and **Paul Munro**, Department Informatics and Networked Systems

Because Alzheimer's pathogenesis begins a decade or more before the onset of clinical symptoms, we seek to identify in electronic health records the antecedents of disease that warrant additional scrutiny as possible contributors to or protectors against disease onset. Initial results can then be used to plan larger-scale studies that incorporate neuroimaging, genetics, neuropathology, lifestyle, and other types of data (including longitudinal causal time series modeling) combined with natural language processing and literature-based discovery to develop causal models of disease predictors, onset and progression.

## Pittsburgh Phage Project

**John Williams**, Department of Pediatrics; **Jennifer Bomberger**, Department of Microbiology and Molecular Genetics; **Vaughn Cooper**, Department of Microbiology and Molecular Genetics; **Tim Corcoran**, Department of Medicine; **Yohei Doi**, Department of Medicine; **Balasubramani Goundappa**, Department of Epidemiology; **Graham Hatfull**, Department of Biological Sciences; **Ghady Haidar**, Department of Medicine; **Alina Iovleva**, Department of Medicine; **Geoff Kurland**, Pediatrics; **Seema Lakdawala**, Department of Microbiology and Molecular Genetics; **Marian Michaels**, Department of Pediatrics; **Stephanie Mitchell**, Department of Pathology; **Lisa Parker**, Department of Human Genetics; **Joe Pilewski**, Department of Medicine; **Jim Pipas**, Department of Biological Sciences; **Doug Reed**, Department of Immunology; **Ryan Shields**, Department of Medicine; **Fernanda Silveira**, Department of Medicine; **Daria Van Tyne**, Department of Medicine; **Anna Wang-Erickson**, Department of Pediatrics; and **Steve Wisniewski**, Department of Epidemiology

Antimicrobial resistance is a serious public health problem causing millions of infections and thousands of deaths in children and adults annually. An increasing number of infections are due to multidrug-resistant organisms that are resistant to most or even all antibiotics. With few new antibiotics in development, an emerging approach is phage therapy. Phages are naturally occurring viruses that infect and kill specific bacterial species or strains. However, the field is nascent, much remains undiscovered, and more basic and clinical research is needed to discover whether phage therapy is a broadly applicable treatment approach.



## Transnational Dialogues in Afro-Latin American and Afro-Latinx Studies

**Michele Reid-Vazquez**, Department of Africana Studies; **Shawn Alfonso-Wells**, Dietrich School Advising Center; **George Reid Andrews**, Department of History; **Jerome Branche**, Department of Hispanic Languages and Literatures; **Gina Garcia**, Department of Administrative and Policy Studies; **Martha Mantilla**, Hillman Library; and **Luis Van Fossen Bravo**, Center for Latin American Studies

Throughout the Americas, a range of societal shifts have advanced the need for a more transnational framework for studying the hemisphere, particularly the population of African descent in Latin America and its diasporic communities. Notably, contemporary Latin America has witnessed an expansion of social movements and policies addressing race, gender, and citizenship. In the United States, the Midwest has experienced a dramatic increase in Spanish Caribbean populations—from 33% in Pennsylvania to 229% in Ohio. Transnational Dialogues seeks to expand transnational, transregional, and interdisciplinary research, education, and programming with the goal of developing broad-scale and global research alliances.



## SEEDING GRANTS

Seeding Grants, which provide up to \$16,000 per year, support significant and innovative scholarship by individual or small groups of faculty at all ranks at the University of Pittsburgh. In constructing each year's portfolio of awards, attention is given to supporting early career faculty and areas where opportunities for extramural funding are extremely limited. Proposals are reviewed in four tracks: Creative Arts, Performing Arts and Humanities; Engineering, Technology, Natural Sciences, and Mathematical Sciences; Health and Life Sciences; and Social Sciences, which includes business, policy, law, education, and social work. This year, an additional track was included as one of the dedicated funding streams made available to energize grassroots solutions for preventing sexual misconduct at the University.

**A Vile, Filthy Book: The Sensational Trial Prosecuting Birth Control in Victorian England**  
**Michael Meyer**, Department of English

**Achieve Real-time Object Detection for 4K and 8K Endoscopes with FPGA**  
**Jingtong Hu**, Department of Electrical and Computer Engineering

**Alzheimer's Disease and the Axon Initial Segment: A Powerful New Disease Model**  
**Karl Herrup**, Department of Neurobiology, and  
**Benjamin Benosman**, Department of Ophthalmology

**Building Workplace Democracy**  
**Trevor Young-Hyman**, College of Business Administration

**Chemistries for Targeted Delivery of Agrochemicals: Development and Feasibility Testing**

**Leanne Gilbertson**, Department of Civil and Environmental Engineering

**Closed Circuit Electronic Playground**

**Zachary Horton**, Department of English

**Common Sense for Visual Reasoning Tasks**

**Adriana Kovashka**, Department of Computer Science

**Determinants of Executive Function Development: A Motor Training Study**

**Klaus Libertus**, Department of Psychology

**Development of Real Gas Kinetic Chemistry at High Pressures**

**Shervin Sammak**, Department of Mechanical Engineering and Materials Science

**Diophantine Geometry and Galois Representations**

**Carl Wang-Erickson**, Department of Mathematics

**Dynamic Repositioning of Condition-based and Opportunistic Maintenance Resources**

**Lisa Maillart**, Department of Industrial Engineering

**Economic Inequality, “Status” Threat, and Support for Exclusionary Rhetoric among Right-wing Populists in the United States and Europe**

**Emily West**, Department of Political Science

**Epigenetic Aging and Cognitive Health: A Pilot Study**

**Rebecca Reed**, **Anna Marsland**, and **Steve Manuck**, Department of Psychology

**Evaluating Prescription Drug Subsidies for Diabetics: Effects on Medication Adherence and Health Outcomes**

**Eric Roberts**, Department of Health Policy and Management, and **Inmaculada Hernandez**, Department of Pharmacy and Therapeutics

**Fuel Recycling at Copper Catalysts**

**Raúl Hernández Sánchez**, Department of Chemistry

**Genetic Tools for Identifying Regulators of Cell Morphology**

**Jeffrey Hildebrand**, Department of Biological Sciences

**Grandparents Raising Grandchildren: A Strength-Based Perspective and Intervention**

**Fengyan Tang** and **Elizabeth Farmer**, School of Social Work

**Investigating Targettable Pathways in Robinow Syndrome**

**Heather Szabo Rogers**, Department of Oral Biology

**Killing “Nicely”**

**Elizabeth Pitts**, Department of English

**Laser-induced Formation of Nanocarbons with Tunable Morphology Directly on Polymers**

**Mostafa Bedewy**, Department of Industrial Engineering

**Locomotor Adaptability for Community Mobility of Older Adults: The Role of Gait Automaticity**

**Andrea Rosso**, Department of Epidemiology; **Gelsy Torres-Oviedo**, Department of Bioengineering; and **Andrea Weinstein**, Department of Psychiatry

**Naval Nostalgia and Racial Memory in the United States, United Kingdom, and the Netherlands**

**Peter Campbell**, Department of English

**Plasticity and Possibility in Regenerative Biology: Model Organisms and New Human Biologies**

**Emily Wanderer**, Department of Anthropology

**Proposal for Support of the UPJ Soil Judging Team**

**Mitzy Schaney**, Division of Social Science, University of Pittsburgh at Johnstown

**Reimagining Silent Film through Screenshot: Silent Asia**

**Charles Exley**, Department of East Asian Languages and Literatures

**Russian Sovereign, Islamic Dynast: Papering over Semicolonialism in 19th-century Central Asia**

**James Pickett**, Department of History

**Safely Staging Sex and Violence for the Academic Performer**

**Karen Gilmer**, Department of Theatre Arts

**Scalable Artificial Synapses with Tunable Spatiotemporal Dynamics for Neuromorphic Computing**

**Feng Xiong**, Department of Electrical and Computer Engineering

**The Bonn Lancelot Manuscript and Its Illustrations**

**Alison Stones**, Department of History of Art and Architecture

**The Emergence of Corporate Venture Capital in China: A Field Study**

**Ravi Madhavan**, College of Business Administration

**The Evolutionary Potential of the Determinants of Species Coexistence**

**Martin Turcotte**, Department of Biological Sciences

**Transatlantic Dialogues: Sectarian Violence and Popular Performance in 19th-century Belfast**  
**Michelle Granshaw**, Department of Theatre Arts

**Using Environmental Scans to Guide Campus Sexual Misconduct Prevention**  
**Elizabeth Miller** and **Janine Talis**, Department of Pediatrics

**We Crossed the River**  
**Eric Moe**, Department of Music, and **Angie Cruz**, Department of English

**Ecological Consequences of the Physiological Responses of Gray Treefrogs, *Hyla Versicolor*, to Acid Mine Drainage**  
**Luis Alberto Bonachea**, Division of Natural Sciences, University of Pittsburgh at Johnstown

**Design and Scale-up of Photobioreactor – Experimental and Numerical Study**  
**Shivkumar Bale** and **Ramesh Singh**, Division of Engineering, University of Pittsburgh at Johnstown

## **Pitt Seed Grant Special Cycle: Prevention of Sexual Misconduct, 2020**

**Adrian Ballard**,  
School of Social Work

**Mary Besterfield-Sacre**,  
Swanson School of Engineering

**Eddie Buggie**,  
Office of the President, Pitt-Bradford

**Carla Chugani**,  
Department of Pediatrics

**Christy Clark**,  
Office of the President, Pitt-Bradford

**Ronna Colland**,  
Administrative Services, Pitt-Greensburg

**Matthew Comito**,  
Office of Public Safety and Emergency Management

**Sheila Confer**,  
Student Services and Humanities, Pitt-Greensburg

**Ann Emmerling**,  
Blackburn Center

**Laura Fink**,  
Department of Athletics

**Rachel Gartner**,  
School of Social Work

**Ashley Hill**,  
Department of Pediatrics

**Tim Holler**,  
Division of Behavioral Sciences, Pitt-Greensburg

**Holger Hoock**,  
Dietrich School of Arts and Sciences

**Jackie Horrall**,  
Academic Affairs, Pitt-Greensburg

**Ron Idoko**,  
Office of Diversity and Inclusion

**Adam Lee**,  
School of Computing and Information

**Mandi Mahramas**,  
Department of Athletics

**Chase McIntyre**,  
Department of Athletics

**Elizabeth Miller**,  
Department of Pediatrics

**Michele Montag**,  
Dietrich School of Arts and Sciences

**Lauren Risser**,  
Department of Pediatrics

**Penny Semaia**,  
Department of Athletics

**Briar Somerville**,  
Office of Diversity and Inclusion

**Lynissa R. Stokes**,  
Department of Pediatrics

**Katie Stumpp**,  
Department of Athletics

**Janine Talis**,  
Department of Pediatrics

**Michelle Therminy**,  
Office of the President, Pitt-Bradford

**Anthony Verardi**,  
Dietrich School of Arts and Sciences  
Graduate Student Organization

**Darren Whitfield**,  
Department of Psychiatry



## FORGE YOUR OWN PATH GRANTS

When students are empowered to engage in educational experiences and activities tailored around their individual needs and interests, they learn more. Forge Your Own Path Grants, which provide up to \$25,000, support projects that integrate the rich expertise and network of the Pitt community with new and emerging technologies to provide customized, meaningful collaborations, connections, and experiences that will prepare and empower our students to lead lives of self-determined impact.

### **Biology Transfer Students: Building Personalized Connections**

**Jessica Wandelt, Christine Berliner,** and **Kevin Wu,** Department of Biological Sciences

### **Changing the Narrative of Student Success**

**Mary Napoli** and **Rebecca Farabaugh,** Dietrich School of Arts and Sciences

### **Developing Self-care and Personal Wellness in Graduate Students in Health Professions**

**Jamie Kulzer** and **Laura Dietz,** Department of Rehabilitation Science and Technology

### **Expanding and Refining First-year Learning Communities at Pitt-Greensburg**

**Kayla Heffernan,** Division of Natural Sciences, and **Frank Wilson,** Social Sciences, University of Pittsburgh at Greensburg

### **Expanding STEAM Education Pathways: Opportunities for Deeply Personalized Education**

**Cassie Quigley,** Department of Instruction and Learning

### **Persistence, Performance, and Law School: Implementing Interventions to Encourage Growth Mindset, Maximize Education, and Ensure Practice-ready Professionals**

**Ann Sinsheimer** and **Leigh Coogan,** School of Law

**Personalized Course Coaching at Scale: Bringing ECoach to Pitt**

**Jennifer Ganger**, Department of Psychology; **Lingfeng Liu**, Department of Chemistry; and **Jessica Wandelt**, Department of Biological Sciences

**Personalized Education Opportunities within Pitt Studios**

**Kelly Hammonds**, Department of Athletics

**Professional Development Advisor Training and Educational Resources Development**

**Colleen Culley**, **Karen Pater**, and **Kristine Schonder**, Department of Pharmacy and Therapeutics

**Using Data Analytics for Advisors: StudentPaths and Concept Progression Maps**

**Daniel Mosse**, **Sean Bridgen**, and **Nathan Ong**, School of Computing and Information



**INNOVATION IN EDUCATION AWARDS**

Innovation in Education Awards support projects by faculty members for the development of enhanced and innovative teaching techniques and materials that will strengthen the teaching mission of the University. The program seeks ideas that focus on experiential or active learning; innovative, discipline-based approaches to teaching and learning; technology-enhanced learning; and data-driven approaches to the design or assessment of curricular innovation.

**A Flexible and Scalable Approach to Multidisciplinary Introductory Computer Science**

**Nicholas Farnan** and **William Garrison**, Department of Computer Science

**An Augmented Reality Platform for Clinical Procedure Training**

**Dmitriy Babichenko**, Department of Informatics and Networked Systems



**Championing Hearing Using Accessible Medication Experts at the Community Pharmacy: An Over-the-counter Hearing Aid Certificate Program for Student Pharmacists**

**Lucas Berenbrok**, Department of Pharmacy and Therapeutics, and **Elaine Mormer**, Department of Communication Science and Disorders

**Instructional Design for Teaching Clinical Skills in a Flipped Classroom**

**Dawna Duff**, Department of Communication Science and Disorders

**Integration of Computer-aided Design into Electrical Engineering Curriculum Using COMSOL Multiphysics**

**Robert Kerestes**, Department of Electrical and Computer Engineering

**#FakeNews: Understanding Journalism, Mass Communication Technologies, and the Rise of Clickbait**

**Jessica Ghilani**, Division of Humanities, Pitt-Greensburg



## **COURSE INCUBATOR PROJECTS**

Course Incubator Grants support projects to radically redesign large-enrollment classes—enrollment of more than 100—to increase the success of students. Projects focus on transformative design of an entire course, including revising syllabi, designing learning activities, developing assessment strategies, and reimagining classroom teaching.

**Department of Biological Sciences - BIOSC 0150**

**Suzanna Gribble, Lesley J. Ashmore, Candice L. Damiani, Samuel S. Donovan, Kathryn E. Gardner, Erica M. McGreevy, Valerie Oke, Linda P. O'Reilly, Laurel B. Roberts, Zuzana Swigonova, and Laura S. Zapanta**

**Department of Chemistry - CHEM 0110**

**Sean Garrett-Roe, Tara Meyer, Tamika Madison, and Jill Millstone**

**Department of Economics - ECON 0100**

**Jane Caldwell Wallace, Katherine Wiley Wolfe, David Hewitt, Svitlana Maksymenko, James Maloy, Kevin Shaver, and Margarita Zabelina**

## AWARDEES SINCE 2017

### Central Research Development Fund

**Raja Adal**, Department of History, 2018  
**Gustavo Almeida**, School of Health and Rehabilitation Sciences, 2018  
**Salah Al-Zaiti**, Department of Acute/Tertiary Care, 2017  
**Elizabeth Arkush**, Department of Anthropology, 2020  
**Shalini Ayyagari**, Department of Music, 2018  
**Tarun Banerjee**, Department of Sociology, 2018  
**Mostafa Bedewy**, Department of Industrial Engineering, 2018  
**Andrea Berman**, Department of Biological Sciences, 2017  
**Kyle Bibby**, Department of Civil and Environmental Engineering, 2017  
**Hoda Bidkhor**, Department of Industrial Engineering, 2017  
**Ryan Bird**, Division of Natural Sciences, Pitt-Johnstown, 2019  
**Joshua Bloom**, Department of Sociology, 2018  
**Ioannis Bourmpakis**, Department of Chemical and Petroleum Engineering, 2017 and 2020  
**Bryan Brown**, Department of Bioengineering, 2020  
**Christopher Brown**, Department of Communication Science and Disorders, 2017  
**Caitlin Bruce**, Department of Communication, 2017  
**Jeanine Buchanich**, Department of Biostatistics, 2019  
**Andrew Bunger**, Department of Civil and Environmental Engineering, 2018  
**Gerard Campbell**, Department of Biological Sciences, 2019  
**Rosemary Capo**, Department of Geology and Environmental Science, 2017  
**Anne Carlson**, Department of Biological Sciences, 2019  
**Deborah Chapman**, Department of Biological Sciences, 2017, 2019  
**Markus Chmielus**, Department of Mechanical Engineering and Materials Science, 2017  
**Sung Kwon Cho**, Department of Mechanical Engineering and Materials Science, 2017  
**Sophia Choukas-Bradley**, Department of Psychology, 2019  
**Youngjae Chun**, Department of Industrial Engineering, 2017, 2020  
**Nicole Coleman**, Pitt Business, 2020  
**Christopher Coughenour**, Department of Energy and Earth Resources, Pitt-Johnstown, 2020  
**Marc Coutanche**, Department of Psychology, 2017  
**Elizabeth Crago**, Department of Acute/Tertiary Care, 2018  
**Jason DeBlois**, Department of Mathematics, 2017  
**Sabina Deitrick**, Graduate School of Public and International Affairs, 2018  
**Jill Demirci**, Department of Health Promotion and Development, 2018  
**Dawna Duff**, Department of Communication Science and Disorders, 2018  
**Jacob Durrant**, Department of Biological Sciences, 2018  
**Müge Finkel**, Graduate School of Public and International Affairs, 2018  
**Gina Garcia**, Department of Administrative and Policy Studies, 2019

**Hayley Germack**, Department of Acute/Tertiary Care, 2020  
**Bethany Gibbs**, Department of Health and Physical Activity, 2017  
**Leanne Gilbertson**, Department of Civil and Environmental Engineering, 2018 and 2019  
**Andres Gomez Escobar**, Department of Industrial Engineering, 2019  
**Brandon Grainger**, Department of Electrical and Computer Engineering, 2020  
**Marsha Grimminger**, Division of Natural Sciences, Pitt-Johnstown, 2019  
**Joshua Groffman**, Division of Communication and the Arts, Pitt-Bradford, 2017 and 2020  
**Sarah Haig**, Department of Civil and Environmental Engineering, 2020  
**Sarah Hainer**, Department of Biological Sciences, 2020  
**Lauren Hallion**, Department of Psychology, 2018  
**Marquis Hawkins**, Department of Epidemiology, 2020  
**Jill Henning**, Division of Natural Sciences, Pitt-Johnstown, 2019  
**Raúl Hernández Sánchez**, Department of Chemistry, 2020  
**Tina Hershey**, Department of Health Policy and Management, 2020  
**Katherine Hornbostel**, Department of Mechanical Engineering and Materials Science, 2020  
**Jingtong Hu**, Department of Electrical and Computer Engineering, 2019  
**Geoffrey Hutchison**, Department of Chemistry, 2019  
**Tristen Inagaki**, Department of Psychology, 2017  
**Katharine Jacobs**, Department of Instruction and Learning, 2020  
**Leah Jacobs**, School of Social Work, 2019  
**Tevis Jacobs**, Department of Mechanical Engineering and Materials Science, 2017 and 2020  
**Daniel Jiang**, Department of Industrial Engineering, 2018  
**Paul Johnson**, Department of Communication, 2019  
**Shirin Fozi Jones**, Department of History of Art and Architecture, 2019  
**Margaret Judd**, Department of Anthropology, 2018  
**Sungkyu Jung**, Department of Statistics, 2017  
**Chae Ryon Kang**, Department of Biostatistics, 2019  
**Jacob Kariuki**, Department of Health and Community Systems, 2018  
**Samannaaz Khoja**, Department of Physical Therapy, 2020  
**Tuangtip Klinbubpa-Neff**, Division of Humanities, Pitt-Johnstown, 2017  
**Christopher Kline**, Department of Health and Physical Activity, 2018  
**Kevin Kohl**, Department of Biological Sciences, 2019 and 2020  
**Adriana Kovashka**, Department of Computer Science, 2017, 2019  
**Mangesh Kulkarni**, Department of Bioengineering, 2020  
**Jennifer Laaser**, Department of Chemistry, 2018  
**Daniel Lambrecht**, Department of Chemistry, 2019  
**Miler Lee**, Department of Biological Sciences, 2019  
**Sangyeop Lee**, Department of Mechanical Engineering and Materials Science, 2017 and 2018

**Young Ji Lee**, Department of Health and Community Systems, 2020

**Dan Li**, Department of Health and Community Systems, 2017

**Lei Li**, Department of Chemical and Petroleum Engineering, 2017 and 2019

**Klaus Libertus**, Department of Psychology, 2018

**Melissa Libertus**, Department of Psychology, 2018

**Sera Linardi**, Graduate School of Public and International Affairs, 2018

**Steven Little**, Department of Chemical and Petroleum Engineering, 2020

**Tomas Matza**, Department of Anthropology, 2017

**Tessa McCarthy**, Department of Instruction and Learning, 2018

**Lee McDermott**, Department of Pharmaceutical Sciences, 2017

**Rebecca McHugh**, Division of Behavioral and Social Sciences, Pitt-Bradford, 2019

**Patrick McKelvey**, Department of Theatre Arts, 2020

**James McKone**, Department of Chemical and Petroleum Engineering, 2019

**Nadine McQuarrie**, Department of Geology and Environmental Science, 2018

**Stephen Meriney**, Department of Neuroscience, 2018

**Iva Miljkovic**, Department of Epidemiology, 2018

**Rachel Miller**, Department of Epidemiology, 2019

**Kevin Mollen**, Department of Surgery, 2020

**Carla Ng**, Department of Civil and Environmental Engineering, 2018 and 2019

**Tagbo Niepa**, Department of Chemical and Petroleum Engineering, 2020

**Shyamal Peddada**, Department of Biostatistics, 2019

**Barbara Petrosky**, Division of Humanities, Pitt-Johnstown, 2019

**Louis Picard**, Graduate School of Public and International Affairs, 2019

**Oleg Prokopyev**, Department of Industrial Engineering, 2018

**Shanti Rabindran**, Graduate School of Public and International Affairs, 2020

**Michele Reid**, Department of Africana Studies, 2019

**Zhao Ren**, Department of Statistics, 2020

**Piervincenzo Rizzo**, Department of Civil and Environmental Engineering, 2017

**Rachel Robertson**, Department of Instruction and Learning, 2017

**Margaret Rosenzweig**, Department of Acute/Tertiary Care, 2020

**Sharon Ross**, Department of Health and Physical Activity, 2017

**Vinayak Sant**, Department of Pharmaceutical Sciences, 2018

**Armin Schikorra**, Department of Mathematics, 2019

**Karina Schumann**, Department of Psychology, 2017

**Yogita Shamdasani**, Department of Economics, 2020

**Eitan Shelef**, Department of Geology and Environmental Sciences, 2017

**Kay Shimizu**, Department of Political Science, 2019

**Michelle Sobolak**, Department of Instruction and Learning, 2020

**Jason Shoemaker**, Department of Chemical and Petroleum Engineering, 2019

**Max Stephens**, Department of Civil and Environmental Engineering, 2019

**Jessica Stephenson**, Department of Biological Sciences, 2020

**Heather Szabo Rogers**, Department of Oral Biology, 2017

**Susheng Tan**, Department of Electrical and Computer Engineering, 2018

**Brian Thomas**, Department of Geology and Environmental Science, 2019

**Teresa Thomas**, Department of Health Promotion and Development, 2019

**Yiming Wang**, Department of Chemistry, 2019

**Rebecca Webb**, Division of Natural Sciences, Pitt-Johnstown, 2017

**Josef Werne**, Department of Geology and Environmental Science, 2020

**Emily West**, Department of Political Science, 2019

**Darren Whitfield**, School of Social Work, 2018

**Christopher Wilmer**, Department of Chemical and Petroleum Engineering, 2017

**Jonathan Woon**, Department of Political Science, 2018

**Eugenia Wu**, Pitt Business, 2017, 2020

**Feng Xiong**, Department of Electrical and Computer Engineering, 2018 and 2019

**Wei Xiong**, Department of Mechanical Engineering and Materials Science, 2019

**Corinne Zawacki**, Department of Biological Sciences, 2020

**Bo Zeng**, Department of Industrial Engineering, 2017

## Innovation in Education Award 2018

**Sara Baumann**, Department of Behavioral and Community Health Sciences, 2018

**Renee Clark**, Department of Industrial Engineering, 2018

**Samuel Dickerson**, Department of Electrical and Computer Engineering, 2018

**Gianni Downs**, Department of Theatre Arts, 2018

**Annamarie Duggan**, Department of Theatre Arts, 2018

**Elizabeth Felter**, Department of Behavioral and Community Health Sciences, 2018

**Ashley Firm**, Department of Pharmacy and Therapeutics, 2018

**Leah Jacobs**, School of Social Work, 2018

**Paul Lucas**, Division of Humanities, Pitt-Johnstown, 2018

**Tommy Mayberry**, Division of Biological and Health Sciences, Pitt-Bradford, 2018

**Emily Murphy**, Department of Physician Assistant Studies, 2018

**Diane Nicodemus**, Division of Humanities, Pitt-Johnstown, 2018

**Helen Petracchi**, School of Social Work, 2018

**Sarah Ruffell**, Division of Biological and Health Sciences, Pitt-Bradford, 2018

**Zuzana Swigonova**, Department of Biological Sciences, 2018

**Patty Wharton-Michael**, Division of Humanities, Pitt-Johnstown, 2018

## Personalized Education Grant

**Andrea Abt**, Pitt Interprofessional Center for Health Careers, 2019

**Liz Adams**, College of Business Administration, 2019

**Ryan Alvarado**, Department of Mathematics, 2019

**Dmitriy Babichenko**, Department of Informatics and Networked Systems, 2020

**Jordan Ariel Barria Pineda**, Department of Informatics and Networked Systems, 2019

**Paul Barto**, Department of Athletics, 2019 and 2020

**Christine Berliner**, Department of Biological Sciences, 2019

**Peter Brusilovsky**, Department of Informatics and Networked Systems, 2019 and 2020

**Kim Hung Chau**, Department of Informatics and Networked Systems, 2019

**Susie Chen**, Department of Psychology, 2019

**Kar Hai Chu**, Department of Medicine, 2019 and 2020

**Denise Chisholm**, Department of Occupational Therapy, 2020

**Leigh A. Coogan**, School of Law, 2020

**Shelby Dawkins-Law**, Department of Administrative and Policy Studies, 2020

**Linda DeAngelo**, Department of Administrative and Policy Studies, 2019 and 2020

**Samuel Dickerson**, Department of Electrical and Computer Engineering, 2019

**Lina Dostilio**, Office of Community and Governmental Relations, 2019 and 2020

**Gianni Downs**, Department of Theatre Arts, 2020

**Dawn Drahnak**, Division of Nursing and Health Sciences, Pitt-Johnstown, 2020

**Annmarie Duggan**, Department of Theatre Arts, 2020

**Benjamin Espinoza**, Mathematics, Pitt-Greensburg, 2020

**Mallory Ferguson**, Division of Nursing and Health Sciences, Pitt-Johnstown, 2020

**Kenrick Fernandes**, Department of Computer Science, 2019

**Beth Fields**, Department of Occupational Therapy, 2020

**Julie Fiez**, Department of Psychology, 2019

**Cassidy Fischer**, Department of Film Studies (Alumna), 2019

**Derek Fisher**, Dietrich School of Arts and Sciences, 2019

**Omid Fotuhi**, Learning Research and Development Center, 2019 and 2020

**Brian Galla**, Department of Psychology in Education, 2019

**Casey Garrow**, Department of Athletics, 2019 and 2020

**Lorin Grieve**, Department of Pharmacy and Therapeutics, 2019

**Kelly Hammonds**, Department of Athletics, 2019 and 2020

**Kent Harries**, Department of Civil and Environmental Engineering, 2020

**Daqing He**, Department of Informatics and Networked Systems, 2020

**Kayla A. Heffernan**, Division of Natural Sciences, Pitt-Greensburg, 2020

**Erin Higgins**, Department of Rehabilitation Science and Technology, 2019

**Daniel Hitt**, Division of Humanities, Pitt-Greensburg, 2020

**Elizabeth D. Katrancha**, Division of Nursing and Health Sciences, Pitt-Johnstown, 2020

**Ellen Kelsey**, Department of Biological Sciences, 2019

**Robert Kerestes**, Department of Electrical and Computer Engineering, 2019

**Katherine Kinsinger**, Academic Success Center, Pitt-Johnstown, 2019

**Martha Koehler**, Division of Humanities, Pitt-Greensburg, 2020

**Emily Koren**, Department of Administrative and Policy Studies, 2020

**Eliza Beth Littleton**, Department of Surgery, 2019 and 2020

**Derek McDonald**, College of Business Administration, 2019

**Rebecca McHugh**, Division of Behavioral and Social Sciences, Pitt-Bradford, 2020

**Rami Melhem**, Department of Computer Science, 2019

**Dana Miller-Cotto**, Learning Research and Development Center, 2019

**Janelle Moody**, Department of Occupational Therapy, 2020

**Tim Nokes-Malach**, Department of Psychology, 2019

**Marie Norman**, Department of Medicine, 2020

**Sam Orłowski**, Film Studies, 2020

**William Pamerleau**, Division of Humanities, Pitt-Greensburg, 2020

**Ravi Patel**, School of Pharmacy, 2019 and 2020

**Cheryl Paul**, Swanson School of Engineering, 2020

**Anita Persaud**, Swanson School of Engineering, 2019

**Jenette Phillips**, Department of Mechanical Engineering and Materials Science, 2020

**Caleb Porto**, Department of Mechanical Engineering and Materials Science (Alumnus), 2019

**Chelsea N. Proulx**, Institute for Clinical Research Education, 2020

**Cassie Quigley**, Department of Instruction and Learning, 2020

**Stephen F. Robar**, Division of Behavioral and Social Sciences, Pitt-Bradford, 2020

**Juléen Rodakowski**, Department of Occupational Therapy, 2020

**Ben Rottman**, Department of Psychology, 2019

**Joseph Samosky**, Department of Bioengineering, 2020

**Jake Savitz**, Departments of Communication and Film Studies (Alumnus), 2019

**Armin Schikorra**, Department of Mathematics, 2019

**Ann Sinsheimer**, School of Law, 2020

**Liam Sporrer**, Department of Athletics, 2019 and 2020

**Sybil Streeter**, Department of Psychology, 2019

**Pamela Toto**, Department of Occupational Therapy, 2020

**Chun-Hua Tsai**, Department of Informatics and Networked Systems, 2019

**Natalie Vazquez**, Department of Medicine, 2020

**Jessica Wandelt**, Department of Biological Sciences, 2019

**Kevin Wheeler**, Department of Athletics, 2019 and 2020

**Frank Wilson**, Office of Academic Affairs, Pitt-Greensburg, 2020

**Eben Witherspoon**, Learning Research and Development Center, 2019

**Kevin Wu**, Department of Biological Sciences, 2019

**Lauren Yaich**, Division of Biological and Health Sciences, Pitt-Bradford, 2020

**Michelle Zuckerman-Parker**, Department of Medicine, 2020

## Pitt Seed Grant

**Alaine Allen**, Swanson School of Engineering, 2020

**Christopher Drew Armstrong**, Department of History of Art and Architecture, 2019

**Angela Athanas**, Department of Mathematics, 2020

**Dmitriy Babichenko**, Department of Informatics and Networked Systems, 2019

**Mackenzie Ball**, Department of Computer Science, 2020

**Paul Barto**, Department of Athletics, 2020

**Nehal Bhojak**, Department of Otolaryngology, 2020

**Alex Bittner**, Office of Admissions, Pitt-Greensburg, 2020

**Christopher Bonneau**, Department of Political Science, 2019

**David Boone**, Department of Biomedical Informatics, 2020

**Ronald Brand**, School of Law, 2019

**Melissa Brandes**, Department of Athletics, 2020

**Aaron Brenner**, University Library System, 2020

**Zachary Brodt**, University Library System, 2020

**Judy L. Cameron**, Department of Psychiatry, 2020

**John Camillus**, Pitt Business, 2020

**Babs Carryer**, Innovation Institute, 2020

**Rakie Cham**, Department of Bioengineering, 2019

**Jeremiah Coldsmith**, Division of Social Sciences, Pitt-Johnstown, 2019

**Nancy Condee**, Department of Slavic Languages and Literatures, 2019

**Christine Dahlin-Schuster**, Division of Natural Sciences, Pitt-Johnstown, 2019

**Lori Delale-O'Connor**, School of Education, 2020

**George Dougherty**, Graduate School of Public and International Affairs, 2020

**Ervin Dyer**, Office of University Communications and Marketing, 2020

**Stephen Emery**, Department of Obstetrics, Gynecology and Reproductive Sciences, 2019

**Kerry Empey**, Department of Pharmacy and Therapeutics, 2020

**Max Fedor**, Department of Otolaryngology, 2020

**Goeran Fiedler**, Department of Rehabilitation Science and Technology, 2020

**Müge Finkel**, Graduate School of Public and International Affairs, 2020

**Ann Gleason**, Center for Military Medicine Research, 2020

**Becky Gonda**, Department of Biological Sciences, 2020

**Benjamin Gordon**, Department of Religious Studies, 2020

**Aaron Graham**, University Center for Teaching and Learning, 2019

**Kelly Hammonds**, Department of Athletics, 2020

**Jill Henning**, Division of Natural Sciences, Pitt-Johnstown, 2019

**Zach Horton**, Department of English, 2020

**Melanie Hughes**, Department of Sociology, 2020

**Jennifer Iriti**, Learning Research and Development Center, 2020

**Stephanie Jimenez**, Division of Natural Sciences, Pitt-Johnstown, 2019

**Lorna Kearns**, University Center for Teaching and Learning, 2019

**Ross Kleinstuber**, Division of Social Sciences, Pitt-Johnstown, 2019

**Rachel Kranson**, Department of Religious Studies, 2020

**Krista Kutina**, Department of Rehabilitation Science and Technology, 2020

**Maureen Lazar**, Kenneth P. Dietrich School of Arts and Sciences, 2020

**Alison Slinsky Legg**, Department of Biological Sciences, 2020

**Brianna Lombardi**, School of Social Work, 2020

**Jared Magnani**, Department of Medicine, 2020

**Jessica Malandro**, Innovation Institute, 2020

**Amber McAlister**, Division of Humanities, Pitt-Greensburg, 2019

**David Y. Miller**, Graduate School of Public and International Affairs, 2020

**Ann Mitchell**, Department of Health and Community Systems, 2020

**Michele Montag**, Dietrich School of Arts and Sciences, 2020

**Scott Morgenstern**, Department of Political Science, 2020

**Clark Muenzer**, Department of German, 2019

**Tim Nokes-Malach**, Department of Psychology, 2020

**Esohe Osai**, Department of Psychology in Education, 2020

**Leigh Patel**, School of Education, 2019

**Ravi Patel**, School of Pharmacy, 2020

**Elizabeth Pitts**, Department of English, 2020

**Sandra Prigg-Monteverde**, Graduate School of Public and International Affairs, 2020

**Lisa Reffner**, Office of the Registrar, Pitt-Greensburg, 2020

**Michele Reid-Vazquez**, Department of Africana Studies, 2019

**Sylvia Rhor Samaniego**, Department of History of Art and Architecture, 2020

**Daniel Rosen**, School of Social Work, 2020

**Margaret Rosenzweig**, Department of Acute/Tertiary Care, 2020

**Julia Santucci**, Graduate School of Public and International Affairs, 2020

**Jennifer Silk**, Department of Psychology, 2020

**Abdesalam Soudi**, Department of Linguistics, 2019

**Natasha Tokowicz**, Department of Psychology, 2020

**Luis Vargas**, Pitt Business, 2019

**David Vorp**, Department of Bioengineering, 2020

**David Wallace**, Department of Critical Care Medicine, 2019

**Y. Ken Wang**, Division of Management and Education, Pitt-Bradford, 2020

**Karin Warner**, Department of Nurse Anesthesia, 2020

**Kurt Weiss**, Department of Orthopaedic Surgery, 2019

**Geoffrey Wood**, Division of Social Sciences, Pitt-Greensburg, 2020

**Jennifer Woodward**, Office of the Senior Vice Chancellor for Research, 2019

**Gerald Zahorchak**, Division of Education, Pitt-Johnstown, 2019

**Haihui Zhang**, University Library System, 2019

## Social Sciences Research Initiative

**Raja Adal**, Department of History, 2020  
**Chris Belasco**, Graduate School of Public and International Affairs, 2019  
**Paola Buitrago**, Pittsburgh Supercomputing Center, 2020  
**Heath Cabot**, Department of Anthropology, 2019  
**Michael Colaresi**, Department of Political Science, 2020  
**Michael R. Dietrich**, Department of History and Philosophy of Science, 2019  
**Yue Ding**, Department of Political Science, 2018  
**Rosta Farzan**, Department of Informatics and Networked Systems, 2018  
**Müge Finkel**, Graduate School of Public and International Affairs, 2019  
**Michael Goodhart**, Department of Political Science, 2019  
**Bryan Hanks**, Department of Anthropology, 2018  
**Jamie Hanson**, Department of Psychology, 2019  
**Melanie Hughes**, Department of Sociology, 2019  
**Prashant Krishnamurthy**, Department of Informatics and Networked Systems, 2020  
**Carrie Leana**, Pitt Business, 2020  
**Yu-Ru Lin**, Department of Informatics and Networked Systems, 2020  
**Sera Linardi**, Graduate School of Public and International Affairs, 2020  
**Ravindranath Madhavan**, Pitt Business, 2018  
**Elizabeth Miller**, Department of Pediatrics, 2020  
**Scott Morgenstern**, Department of Political Science, 2020  
**Maureen Porter**, Department of Administrative and Policy Studies, 2019  
**Cassie Quigley**, Department of Instruction and Learning, 2020  
**Jeffrey Shook**, School of Social Work, 2018  
**Jennifer Silk**, Department of Psychology, 2020  
**Matiangai Sirleaf**, School of Law, 2019  
**Lu-in Wang**, School of Law, 2020  
**Ming-Te Wang**, Department of Psychology in Education, 2019  
**Mari Webel**, Department of History, 2019  
**Philip Williams**, Graduate School of Public and International Affairs, 2020  
**Jonathan Woon**, Department of Political Science, 2020

## Special Initiative to Promote Scholarly Activities in the Humanities

**Raja Adal**, Department of History, 2020  
**Erin Anderson**, Department of English, 2019  
**Mark Lynn Anderson**, Department of English, 2018, 2019 and 2020  
**Shalini Ayyagari**, Department of Music, 2017  
**Elisa Beshero-Bondar**, Division of Humanities, Pitt-Greensburg, 2018  
**David Birnbaum**, Department of Slavic Languages and Literatures, 2019  
**Jerome Branche**, Department of Hispanic Languages and Literatures, 2020  
**Caitlin Bruce**, Department of Communication, 2019

**Paola Buitrago**, Pittsburgh Supercomputing Center, 2020  
**Peter Campbell**, Department of English, 2020  
**Mazviita Chirimuuta**, Department of History and Philosophy of Science, 2017  
**Angie Cruz**, Department of English, 2017 and 2019  
**Charles Exley**, Department of East Asian Languages and Literatures, 2019  
**Jules Gill-Peterson**, Department of English, 2018, 2019 and 2020  
**Laura Gotkowitz**, Department of History, 2019  
**Joshua Groffman**, Division of Communication and the Arts, Pitt-Bradford, 2020  
**Randall Halle**, Department of German, 2018 and 2019  
**Cory Holding**, Department of English, 2020  
**Zachary Horton**, Department of English, 2020  
**Tracee Howell**, Division of Communication and the Arts, Pitt-Bradford, 2019  
**Aaron Johnson**, Department of Music, 2019  
**Shirin Fozi Jones**, Department of History of Art and Architecture, 2018  
**Jeanette Jouili**, Department of Religious Studies, 2018  
**Tuangtip Klinbubpa-Neff**, Division of Humanities, Pitt-Johnstown, 2017  
**Neepa Majumdar**, Department of English, 2019  
**Dawn Lundy Martin**, Department of English, 2018  
**Ryan McDermott**, Department of English, 2019  
**Patrick McKelvey**, Department of Theatre Arts, 2020  
**Michael Meyer**, Department of English, 2017 and 2020  
**Benjamin Miller**, Department of English, 2017  
**Elizabeth Monasterios**, Department of Hispanic Languages and Literatures, 2019 and 2020  
**Michael Morrill**, Department of Studio Arts, 2018  
**Christopher Nygren**, Department of History of Art and Architecture, 2019  
**David Pettersen**, Department of French and Italian Languages and Literatures, 2019  
**James Pickett**, Department of History, 2019 and 2020  
**Elizabeth Pitts**, Department of English, 2019 and 2020  
**Mrinalini Rajagopalan**, Department of History of Art and Architecture, 2019  
**Todd Reeser**, Department of French and Italian Languages and Literatures, 2019  
**Pernille Roege**, Department of History, 2019  
**Gayle Rogers**, Department of English, 2019  
**Mathew Rosenblum**, Department of Music, 2017 and 2019  
**Shalini Puri**, Department of English, 2020  
**Alexander Taylor**, Department of History of Art and Architecture, 2019  
**David Tenorio**, Department of Hispanic Languages and Literatures, 2020  
**Molly Warsh**, Department of History, 2020  
**Courtney Weikle-Mills**, Department of English, 2018  
**Amy Williams**, Department of Music, 2017





University of  
**Pittsburgh**

Sponsored by the Office of the Provost  
and the Office of the Senior Vice Chancellor  
for Research

The University of Pittsburgh is an affirmative action, equal opportunity institution. Published in cooperation with the Office of University Communications and Marketing.  
112454-0220